

Home Elevator Planning Guide

Designed by

ICARE Lift System

ICARE Lift System

Mumbai | Pune | Bangaluru | Hyderabad

8711882200 | 9819165922

info@icarelifts.com | www.icareifts.com

Overview

- About ICARE Lift System Pg 3 - 6
- Technologies for Home Lifts Pg 7 - 14
- Standard Sizes & Capacities Pg 15
- Design Options & Customizations Pg 16 - 19
- Order Process & Budgetary Pricing Pg 20 - 21
- Customer Scope of Works Pg 22
- Vendor Selection – Key Factors & Mistakes Pg 23 - 25
- Summary Q&A Pg 26 - 27



Customized Lifts | Elevator Solutions
 Passenger Material Construction Lifts
 Imported Home Lifts | Hydraulic Lifts
 Glass Lifts | Car Lifts | Goods Lifts
 Modernization | AMC & Repairs



About – ICARE Lift System

- **Imported Home Lifts**

Villas ; Duplexes ; Bungalows

- **Commercial Capsule | Glass Lifts**

Commercial Buildings ; Retail Stores ; Hotels

- **Passenger & Car Lifts**

Residential & Commercial Buildings

- **Goods | Special Purpose Fire Lifts**

Industrial Complex ; Warehouses ; Factories

- **Passenger & Material Construction Lifts**

High Rise Projects > 15 Floors



Established 1989

50+ Yrs Founders Experience in Elevator Industry

Over **2500 Lifts** Installed across Mumbai, Pune, Bangaluru

Combined Over **50,000** Floors Lifts Installed

Served Over **500** Leading Builders & Architects

Over **250 Cr** Business Executed

Customization | Imported Technology | Expertise | Professional Service Support

Some of Our Works :



[Click For Videos](#)

[Click For Profile](#)

Clients

Passenger | Commercial | Goods Lifts Clients



Home Lift | Hydraulic Lift Clients :

- Mr Niranjan Hiranandani Penthouse, Powai
- Mr Rohit Shetty Apartment, Juhu
- Mr Ness Wadia Bungalow, Prabhadevi
- Bhoomi Builder Bungalow, Goregaon
- Rustomjee Sample Flat, Borivali
- Timekeepers Showroom, Bandra
- Runwal + Reliance Showroom, Mulund
- Pan Parag Bungalow, Juhu & Many More

Service Lifts | Goods Lift Clients :

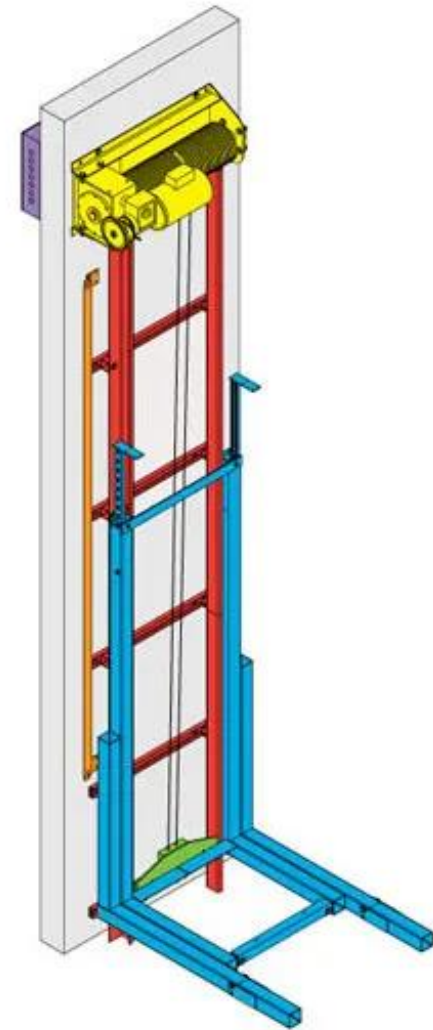
- Four Seasons Hotel, Worli & Pune
- Sahara Star Hotel, Andheri
- Grand Hyatt Hotel, Santacruz
- Rustomjee Cental Park, Andheri
- Reliance Industries, Ghansoli & Many More

Technologies - Electric Traction [MRL]

| | |
|---------------------------|--|
| Machine : | Imported Gearless / Geared Electric Drive Machine |
| Make : | Italian Imported + Proudly Make in India |
| Capacity : | 2 – 3 / 4 - 6 / 6 – 8 Passengers ++ |
| Speed : | 0.3 - 1 mps [Min 10 Sec / Floor] |
| Travel : | 2 – 5 Floors |
| Lift Shaft Size : | Min 1050 x 1050 MM – [Ideal 1350 x 1350 MM] |
| Cabin Size : | Min 900 x 600 MM – 2 Person |
| Machine Room : | Not Required Above Shaft |
| Shaft Design : | 1 Wall Support – RCC / MS Fabrication + Glass Enclosure |
| Top Floor Height : | Min 3000 MM |
| Pit Depth : | Min 300 MM |
| Safety Features : | Auto Rescue Device + 3 Level Protection Devices |
| Price Range : | Rs 6 – 11 Lacs Plus [Platform ; Manual ; Auto Door Options] – 2 Stops |

Other Details :

- Economical Solution
- Space Saving Design
- 1 & 3 Phase Power
- Local Spares Support
- Smooth Operation
- Glass Cabin Design
- Quick Installation
- Local Service Support
- Low Noise Operation
- Manul & Auto Door Option
- Low Maintenance
- Easy to Maintain Alternate Month / Quarterly



[Click For Videos](#) [Click For Profile](#)

Technologies - Electric Traction [MRL]

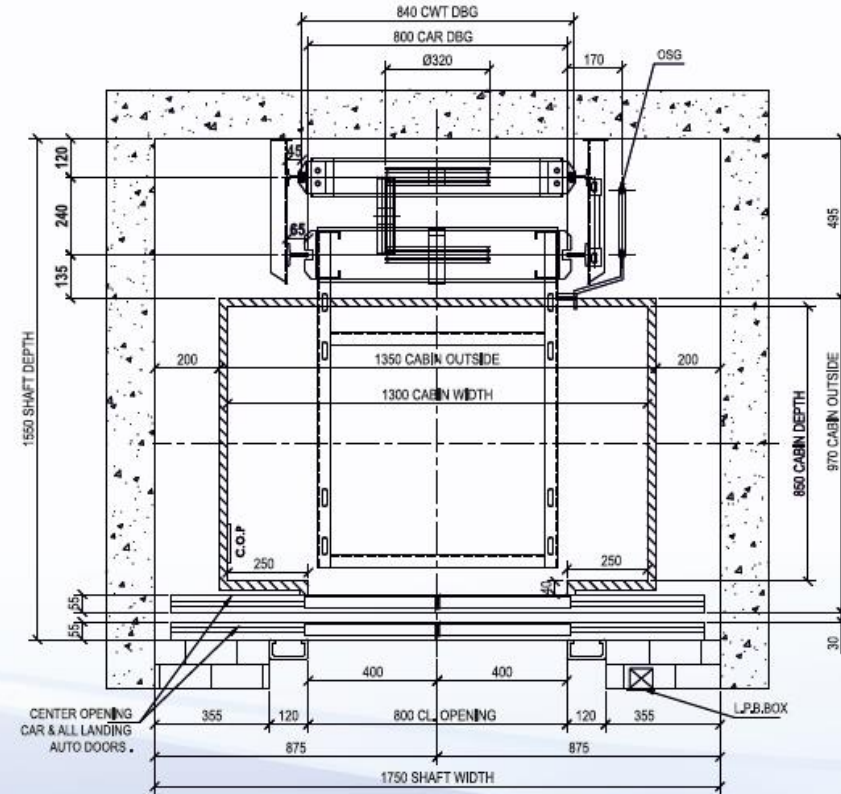
The image displays a variety of components used in MRL electric traction systems. On the left, there are cables, pulleys, a motor, brackets, and other mechanical parts. On the right, a technical drawing shows a shaft assembly with the following dimensions and labels:

- 640, 715 (Overall shaft dimensions)
- 990 CAR DBG, 900 CAR OUTSIDE, 850 CAR WIDTH (Car dimensions)
- 155, 169 (Shaft offset dimensions)
- 1155 CAR OUTSIDE, 1000 CAR DEPTH (Shaft housing dimensions)
- 90, 535, 300, 175, 465 (Vertical dimensions)
- SP. GOV. (Special Governor)
- CTG470 (Counterweight Guide)
- Ø240, Ø320 (Shaft diameters)
- 108 COP (Cable Operating Pulley)
- 65, 160, 700 CWT. DBG (Counterweight dimensions)
- 700 (Shaft length)
- 30, 50, 434 (Internal shaft dimensions)
- L.P.B. BOX ON ALL LANDING (Landing Protection Box)
- 195, 120, 700 CLEAR OPENING, 120, 389 (Clearance and opening dimensions)
- 1524 SHAFT WIDTH (Total shaft width)
- TELESCOPIC OPENING CAR & ALL LANDING AUTO DOORS (Door opening mechanism)

OUR BRAND PARTNERS

Logos of brand partners: Montanari Group, TORNDRIVE, Bharat Bijlee, EUROPA, MARAZZI, usha martin, BUCHER hydraulics, Farmator, ARKEL, genesis, IBST.

Technologies - Electric Traction [MRL]



OUR BRAND PARTNERS

EXPERIENCE THE SUPERIOR ITALIAN TECHNOLOGY

GEARED MACHINES FROM *Montanari*

READY STOCK

SAME DAY GUARANTEED DESPATCH



MG117

Synchronous gearless with permanent magnets
Static load 2,000kg
Traction sheave 160mm
Load up to 480kg., 2:1,0.63



MG127S/M/MLL

Synchronous gearless with permanent magnets
Static load 1,600kg
Traction sheave 320mm
Load up to 1,224kg., 2:1,2.5M/SEC



MG137S/M/MLL

Synchronous gearless with permanent magnets
Static load 3,500kg
Traction sheave 320mm
Load up to S-1600/M-2000/ML-2500/L-3000



MDT96

Static Load 2050 kg
Capacity: 1.020 kg 2:1
Pulley: 400 mm
Gearless weight: 330 kg
Load up to : 1020kg



MDG 45 / 45-FG

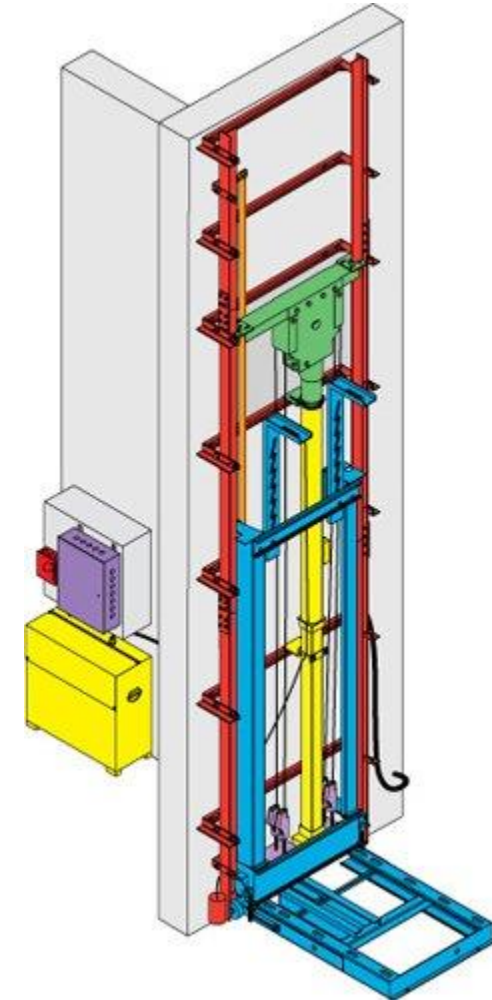
Static Load 2000 kg
Load 450 kg
Speed up to 1 m/s
Sheave 100 mm
Weight 95 kg

Technologies – Imported Hydraulic [MRL]

| | |
|---------------------------|--|
| Machine : | Imported Hydraulic Oil Drive Powerpack Unit |
| Make : | Italian Imported + Proudly Make in India |
| Capacity : | 2 – 3 / 4 - 6 / 6 – 8 Passengers ++ |
| Speed : | 0.2 - 0.5 mps [Min 10 Sec / Floor] |
| Travel : | Ideal 2 – 4 Floors |
| Lift Shaft Size : | Min 1050 x 1050 MM – [Ideal 1350 x 1350 MM] |
| Cabin Size : | Min 900 x 600 MM – 2 Person |
| Machine Room : | Outside Shaft for Powerpack Unit [1100 x 400 x 2000 MM] |
| Shaft Design : | 1 Wall Support – RCC / MS Fabrication + Glass Enclosure |
| Top Floor Height : | Min 2500 MM |
| Pit Depth : | Min 250 MM |
| Safety Features : | Auto Rescue Device + 3 Level Protection Devices |
| Price Range : | Rs 7 – 12 Lacs Plus [Platform ; Manual ; Auto Door Options] – 2 Stops |

Other Details :

- Economical Solution
- Space Saving Design
- 1 & 3 Phase Power
- Local Spares Support
- Smooth Operation
- Glass Cabin Design
- Quick Installation
- Local Service Support
- Low Noise Operation
- Manul & Auto Door Option
- Low Maintenance
- Easy to Maintain – Alternate Month / Quarterly



[Click For Videos](#) [Click For Profile](#)

Technologies – Imported Hydraulic [MRL]

The image displays a comprehensive set of components for an imported hydraulic MRL system. Key elements include:

- Control Cabinet:** A black cabinet labeled "EUROPA" and "FERMATOR EUROPEAN DYNAMIC TECHNOLOGY".
- Structural Frame:** A large black metal frame with an X-brace design.
- Wiring:** A bundle of black cables and a coiled cable.
- Electrical Components:** A green PCB, a white terminal block, and various connectors.
- Hydraulic Parts:** A blue hydraulic valve, springs, and other mechanical hardware.
- Interior View:** A photograph of the MRL cabin interior.
- Technical Diagram:** A detailed cross-section of the shaft and cabin with the following dimensions:
 - 865 CABIN OUTSIDE (Total width)
 - 800 CABIN WIDTH (Internal width)
 - 600 DBG (Distance between guides)
 - Ø240 (Guide diameter)
 - 1300 SHAFT DEPTH (Total shaft depth)
 - 725 CABIN DEPTH (Cabin depth)
 - 880 CABIN OUTSIDE (Total cabin height)
 - 600 CL. OPENING (Clearance opening)
 - 1000 SHAFT WIDTH (Total shaft width)
 - Labels include: L.P.B. BOX ON ALL LANDING, GLASS PANEL, and TELESCOPIC OPENING CAR & ALL LANDING GLASS AUTO DOORS.

OUR BRAND PARTNERS

Technologies – Imported Hydraulic [MRL]

OUR PRODUCTS

POWER UNITS



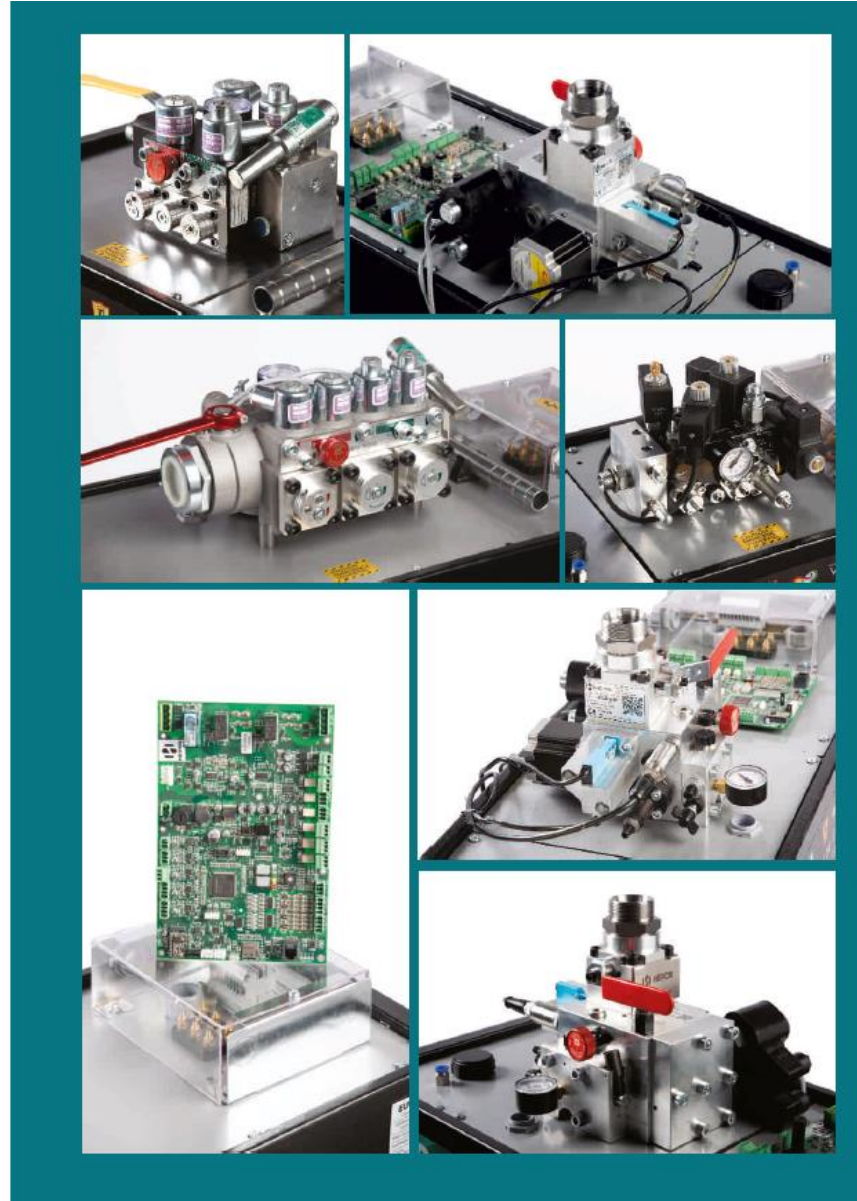
PISTONS



CAR FRAMES



EUROPA
OLEO SYSTEMS



Technologies – Imported Vacuum

| | |
|---------------------------|--|
| Machine : | Imported Vacuum Lift – Air Drive Unit |
| Make : | Italian Imported + Proudly Make in India |
| Capacity : | 2 – 3 Passengers |
| Speed : | 0.15 |
| Travel : | Max 5 Floors |
| Lift Shaft Size : | 950 MM Diameter Round |
| Cabin Size : | 800 MM Diameter Round – 2 Person |
| Machine Room : | Outside Shaft for Air Turbine Unit |
| Shaft Design : | Self Wall Support Glass Enclosure |
| Top Floor Height : | Min 2700 MM |
| Pit Depth : | Min 50 MM |
| Safety Features : | Auto Rescue Device + 3 Level Protection Devices |
| Price Range : | Rs 12 Lacs Plus [ONLY Manual Door Option] – 2 Stops |

Other Details :

- Slow Speed Design
- Unique Round Design
- 1 Phase Power
- Imported Spares
- Smooth Operation
- Only Manual Door
- Quick Installation
- Imported Service
- High Noise Operation
- Transparent PC Sheet
- Low Maintenance
- Complex Maintenance



[Click For Videos](#) [Click For Profile](#)

Ideal Sizes for Home Lifts – All Technologies

Capacity : 1 – 2 Passengers [NO WHEELCHAIR]

Lift Shaft Size : Min - 1050 x 1050 MM
Ideal - 1200 x 1200 MM

Cabin Size : Min 750 x 600 MM
Ideal 900 x 750 MM

Capacity : 2 – 3 Passengers [WITH COMPACT WHEELCHAIR]

Lift Shaft Size : Min - 1200 x 1200 MM
Ideal - 1350 x 1350 MM

Cabin Size : Min 750 x 750 MM
Ideal 900 x 900 MM

Capacity : 4 – 6 Passengers [WITH STANDARD WHEELCHAIR]

Lift Shaft Size : Min - 1350 x 1350 MM
Ideal - 1600 x 1600 MM

Cabin Size : Min 900 x 900 MM
Ideal 1050 x 1050 MM

**Lifts can be Customised as per
the Actual Sizes Available at Site**

Interior Design Options – Standard Cabins

CABINS

MS POWDER COATED



SS HAIR LINE



SS MIRROR CABIN



SS DESIGNER CABIN



POWDER COATINGS

| | | | | | |
|-------------|--------------|------------|------------|---------------|-------------|
| | | | | | |
| ORCHID BLUE | SALMON BROWN | SLATE BLUE | DRAB GREEN | YELLOW ORANGE | LIGHT GRAY |
| | | | | | |
| SILVER GRAY | ICE BLUE | PALE GREEN | PALE BROWN | MOCHA BEIGE | LENIN CREAM |

SS FINISH

| | |
|------------------|------------------|
| | |
| HAIRLINE | MOON ROCK |
| | |
| GOLD MIRROR NO.8 | ROSE GOLD MIRROR |

PRE-LAMINATED FINISH

| | |
|-------|---------|
| | |
| DL 5 | DL 96CE |
| | |
| DL 87 | DL 42E |

ETCHED SS FINISH

| | |
|------------|------------|
| | |
| NS-058 | NS-019 |
| | |
| NS-080 (G) | NS-022 (G) |

GLASS + HANDRAIL

| | |
|--|--|
| <div style="position: absolute; top: 5px; left: 5px; width: 20px; height: 20px; background-color: #A9A9A9;"></div> | <div style="position: absolute; top: 5px; left: 5px; width: 20px; height: 20px; background-color: #A9A9A9;"></div> |
| HALF HEIGHT | FULL HEIGHT |

Interior Design Options – Capsule Glass Cabins

CABIN CEILINGS

CP201 CP202 CP203 CP204



CABIN FLOORING

F001 F002 F003 F004



HAND RAILS

HR401 HR402



CABIN LIGHT

ROUND LED-3/5 W SQUARE LED-3/5 W



CABIN FAN

AXIAL FAN BLOWER FAN



Interior Design Options – Doors

AUTO DOORS

- AUTO DOOR
- VISION AUTO DOOR
- PRE-LAMINATED
- FRAMED GLASS DOOR
- FULL GLASS DOOR

SWING & TMD

- SWING DOOR
- TMD

MANUAL

- COLLAPSIBLE GATE
- IMP MANUAL DOOR
- FRAMES

ACCESSORIES

- GATE LOCKS
- DOOR KEY
- DOOR CAM
- DOOR LOCKS

Fermentor
AUTOMATIC DOORS FOR LIFTS

genests

Exterior Design Options – Lift Structure [If No Wall Support]



Order Process



Material Production : Min 15 – 40 Days [Staggered Deliveries or Full Delivery As per Specifications & Terms]
Installation Period : Min 15 – 20 Days [As per Specifications & Terms]

Order to Handover : 1.5 - 2 Month [Ideally 15 Days Buffer Extra for Misc Issues]

Always Plan & Finalise as Early as Possible, so Sufficient Time is allotted to Quality Checking & Inspection

Budgetary Price Range – G+1 [2 Floors / Stops] – Up to 4 Passenger

Standard Machine Design is for Minimum 4 Passengers ; 2 - 4 Passengers / 272 KG – Design Options & Pricing

Design 1 : **Half Platform Lift + Glass Manual Door**

Price Range : **Electric Traction :** Rs 5 – 6.5 Lacs
Hydraulic : Rs 6 – 7.5 Lacs
Vacuum : Rs 12 Lacs

Extra Floors : Approx 50 k Extra Per Floor
Structure : Rs 75 k - 1 L Per Floor [If Required]

Extra Options : SS Cabin, Glass Cabin, Auto Doors

Design 3 : **SS Cabin + SS AUTO Door**

Price Range : **Electric Traction :** Rs 7.5 – 9 Lacs
Hydraulic : Rs 8 – 10 Lacs
Vacuum : NA

Extra Floors : Approx 75 k Extra Per Floor
Structure : Rs 75 k – 1 L Per Floor [If Required]

Extra Options : Glass Cabin & Doors

Design 2 : **MS Cabin + MS Manual Door**

Price Range : **Electric Traction :** Rs 5 – 6.5 Lacs
Hydraulic : Rs 6 – 8 Lacs
Vacuum : Rs 12 Lacs

Extra Floors : Approx 50 k Extra Per Floor
Structure : Rs 75 k – 1 L Per Floor [If Required]

Extra Options : SS Cabin & Doors, Glass Cabin & Doors

Design 4 : **Glass Cabin + Glass AUTO Door**

Price Range : **Electric Traction :** Rs 9 – 10.5 Lacs
Hydraulic : Rs 10 – 12 Lacs
Vacuum : NA

Extra Floors : Approx 75 k Extra Per Floor
Structure : Rs 75 k – 1 L Per Floor [If Required]

Extra Options : NA

We can Customised Lifts as per your Design, Site Survey and Within your Budget from 5 – 12 Lacs

1 Year Free Full Comprehensive Maintenance + 1 Year Extended Warranty* On Manufacturing Defects

*Does not Cover Accidental or Human Error Damage, Wilful Damage, Damage Due to Water or Other Natural Force Majeure Conditions

Client Scope Works – Turnkey

| | |
|----------------------|---|
| Scaffolding : | Bamboo or MS Scaffolding as per ICARE Drawing |
| Civil : | Clean & Clear Lift Shaft, Lit Pit & White Wash [As Required] Minor Civil Works for Door Lintel, Door Frame as per ICARE Drawing Core Cutting Slab to Create Shaft or Any Minor works as per Site Requirements |
| Electrical : | 3 Phase & Single Phase Power Supply Connection near Control Panel Dedicated connection with MCB, ELCB & Earthing Bulkhead Sockets inside Lift Shaft [As Required] |
| Fabrication : | MS Lift Shaft Fabrication in case of No Wall Support or Free Standing Structure Minor Fabrication Required as per Site Requirements ACP or Glass Cladding of Lift Enclosure [As Required] |
| Store Room : | Dedicated & Secure Store Room for Material & Tools at site |
| MISC : | Any Other Point Related to Site not covered in Above Points |
| NOTE : | All Above Points are Client Scope Points However, to provide a Peaceful experience, We can arrange the same for Extra Convenience Fees |

We can provide Full Turnkey Solution- One Point Contact for All site Readiness Points for Extra Convenience Fees

AVOID THESE MISTAKES!! – Elevator Vendor Selection for Long-Term Success

- **Selecting the Right Elevator Vendor in a Market Flooded with Low Price Options is Extremely Critical**
- **Elevators are more than Commodities**, playing a vital role in **Safety, Convenience, and Efficiency**.
- Opting for **the Lowest Price might** promise Short-term savings but can lead to enduring Challenges and Pain.

7 KEY FACTORS - for Reliability, Efficiency, and Long Term Success

1. Material Quality :

- Why it Matters :** Quality materials underpin elevator durability, safety, and long-term performance.
- Low Price Compromise:** Subpar materials lead to premature wear, frequent malfunctions, and compromised passenger safety.
- Our Commitment :** We source and utilize premium materials, ensuring our elevators meet stringent industry standards, minimizing the risk of breakdowns.

2. Installation Quality :

- Why it Matters:** Proper installation ensures optimal performance and safety.
- Low Price Compromise :** Rushed or unskilled installation can lead to frequent breakdowns and compromised passenger safety.
- Our Assurance:** Our trained technicians adhere to industry best practices, ensuring smooth operation and long-term reliability.

Focus on Quality & Safety

KEY FACTORS!! – Elevator Vendor Selection for Long-Term Success

3. Maintenance Quality :

Why it Matters: Regular, professional maintenance enhances elevator lifespan and minimizes unexpected repairs.
Low Price Compromise : Neglecting maintenance leads to increased downtime, escalating repair costs, and shortened elevator life.

Our Approach: Our proactive maintenance approach, backed by expert teams and scheduled check-ups, guarantees uninterrupted service

4. Professional Service :

Why it Matters: Choosing reputable professionals affects costs and outcomes.
Low Price Compromise : Inexperienced teams compromise installation quality, leading to safety concerns and inefficient operation.

Our Expertise: Our seasoned professionals bring years of experience, ensuring every aspect from installation to maintenance is handled with precision.

5. Total Cost of Ownership :

Why it Matters: An all-encompassing view of costs includes initial, operational, and maintenance expenses.
Low Price Compromise : Opting for cheaper alternatives often results in higher long-term costs due to frequent repairs and replacements.

Our Approach: Our solutions prioritize quality materials and components, reducing TCO through extended lifespan and fewer disruptions.

Focus on Long Term Total Cost of Ownership

KEY FACTORS!! – Elevator Vendor Selection for Long-Term Success

6. Safety Features :

- Why it Matters:** Elevator Safety is Non Negotiable for Passenger well-being.
Advanced Safety Features minimize Accidents and Ensure Secure Operations.
- Low Price Compromise :** Opting for low-cost vendors often sacrifices Safety.
Cheap alternatives Lack Crucial Safety Mechanisms, Risking Passenger Lives.
- Our Pledge to Safety :** We prioritize safety above all else.
Our solutions integrate cutting-edge safety features for reliable and secure elevator usage.

7. Service & Financial Capability : **Most Neglected**

- Why it Matters :** Review Service Portfolio, Expertise and Experience, Client References, Technician Training
Review Financial Statements, Credit Rating, Business History, Size of Operations
Partnering with a Capable & Financially Stable Vendor reduces the risk of sudden service interruptions, in case of key personnel changes or departures and reduces dependency on a limited pool of experts.
Financially Strong vendors invest in Skilled Trainings, R&D, ensuring the Vendor's Longevity in the market
- Low Price Compromise :** Low-cost vendors may lack the personnel and financial resources for swift service and spare support.
Cost-cutting can lead to hiring less experienced technicians and skimping on regular maintenance efforts.
Poor service capability leads to frequent operational disruptions. **Savings from a low-cost vendor are negated by ongoing repair and maintenance costs.**
- Our Pledge :** We Prioritize Financially Sustainable Business Processes, to Deliver Long Term Success

Focus on Long Term Capability

SUMMARY –

| | | | MRL Gearless | Hydraulic | Vacuum* |
|----|-----------------------------|--|----------------------------|----------------------------|-------------------------------------|
| 1 | Drive Technology | | Electric | Hydraulic Oil | Pneumatic Air |
| 2 | Extra Machine Room Above | | No | No. Outside Shaft | No |
| 3 | Min Top Floor Clear Height | | 3000 MM | 3000 MM | 3000 MM |
| 4 | Pit or Step Up | | 300 MM | 250 MM | 50 MM |
| 5 | Best Ride Quality | | 1 st Preference | 2 nd Preference | 3 rd Preference |
| 6 | Low Maintenance | | 1 st | 1 st | 3 rd |
| 7 | Levelling Accuracy | | 1 st | 2 nd | 3 rd |
| 8 | Ease of Installation | | 3 rd | 1 st | 2 nd |
| 9 | Year in Indian Market | | > 15 Yrs | > 15 Yrs | Imported > 10 Yrs Indian < 3 Yrs |
| 10 | Spare Parts Availability | | 1 st | 1 st | 3 rd |
| 11 | Third Party Maintainability | | 1 st | 1 st | 3 rd |
| 12 | Low Operating Noise | | 1 st | 2 nd | 3 rd |
| 13 | Low Operating Cost | | 1 st | 1 st | 3 rd |

SUMMARY –

| | | | MRL Gearless | Hydraulic | Vacuum* |
|----|--|--|----------------------|----------------------|-----------------------|
| | Drive Technology | | Electric | Hydraulic Oil | Pneumatic Air |
| 14 | Auto Door Option | | Yes | Yes | No |
| 15 | Speed | | 0.5 – 1 mps | 0.3 – 0.5 mps | 0.15 mps |
| 16 | Max Floors Recommended | | 7 Floors | 4 Floors | 3 Floors |
| 17 | Auto Rescue Device – Safety | | Yes | Yes | Yes |
| 18 | Overall Safety Features | | 1 st | 1 st | 1 st |
| 19 | Complete Order to Hand Over Time | | Min 45 – 60 Days | Min 30 – 45 Days | Min 60 – 75 Days |
| 20 | Space Efficiency | | 3 rd | 1 st | 1 st |
| 21 | Design Flexibility & Customization | | 1 st | 1 st | 3 rd |
| 22 | Interior & Exterior Design Options | | 1 st | 1 st | 3 rd |
| 23 | Power Supply | | 1 & 3 Phase | 1 & 3 Phase | 1 Phase |
| 24 | License Approval | | Yes PWD | Yes PWD | |
| 25 | Price [Lift + Structure if Required] | | Rs 5 – 12 Lacs + GST | Rs 6 – 12 Lacs + GST | Rs 12 – 14 Lacs + GST |

**All Technology have their Pros & Cons. Site Situation & Client Budget will Help Determine the Best Solution Possible.
Call Us for Site Survey & Transfer your Responsibility to ICARE. Your Reliable Turnkey Lift Solution Provider**

Thank You

Contact Us for Any Questions or Requirements – Free Consultation [Call or Zoom] + Site Survey

ICARE Lift System

Omckar Desae, Director

8711882200 | 9819165922

info@icarelifts.com | www.icareifts.com

Mumbai | Pune | Bangaluru | Hyderabad